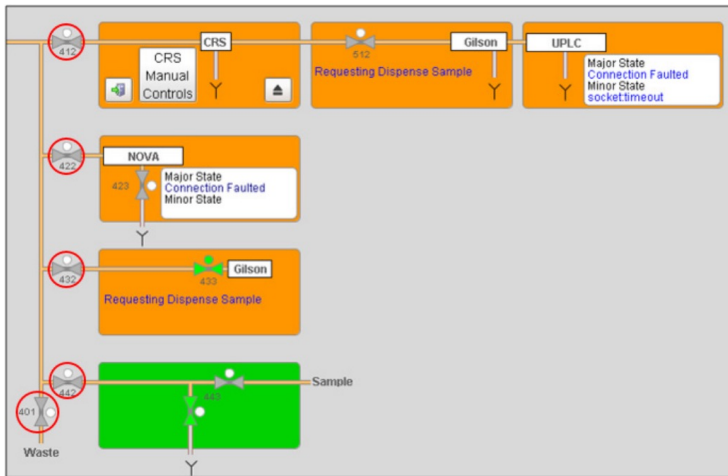




Analytical Navigator Valve Manifold Assembly

The Analytical Navigator Valves consist of the series of valves that are controlled by the Analytical Navigator Controller. The valves route samples to the different analytical destinations. The valves open and close automatically to route sample, sanitant and purge air to destination and waste lines, according to the system configuration in the MASTconnect software.



FEATURES

- Routes sample to up to four destinations
- Sequential sanitization and purge gas flow ensures no cross contamination occurs between samples
- Controlled with MASTconnect software

SPECIFICATIONS

Measurements:

- N/A

Utilities and/or Components Required:

- Analytical Navigator Controller

